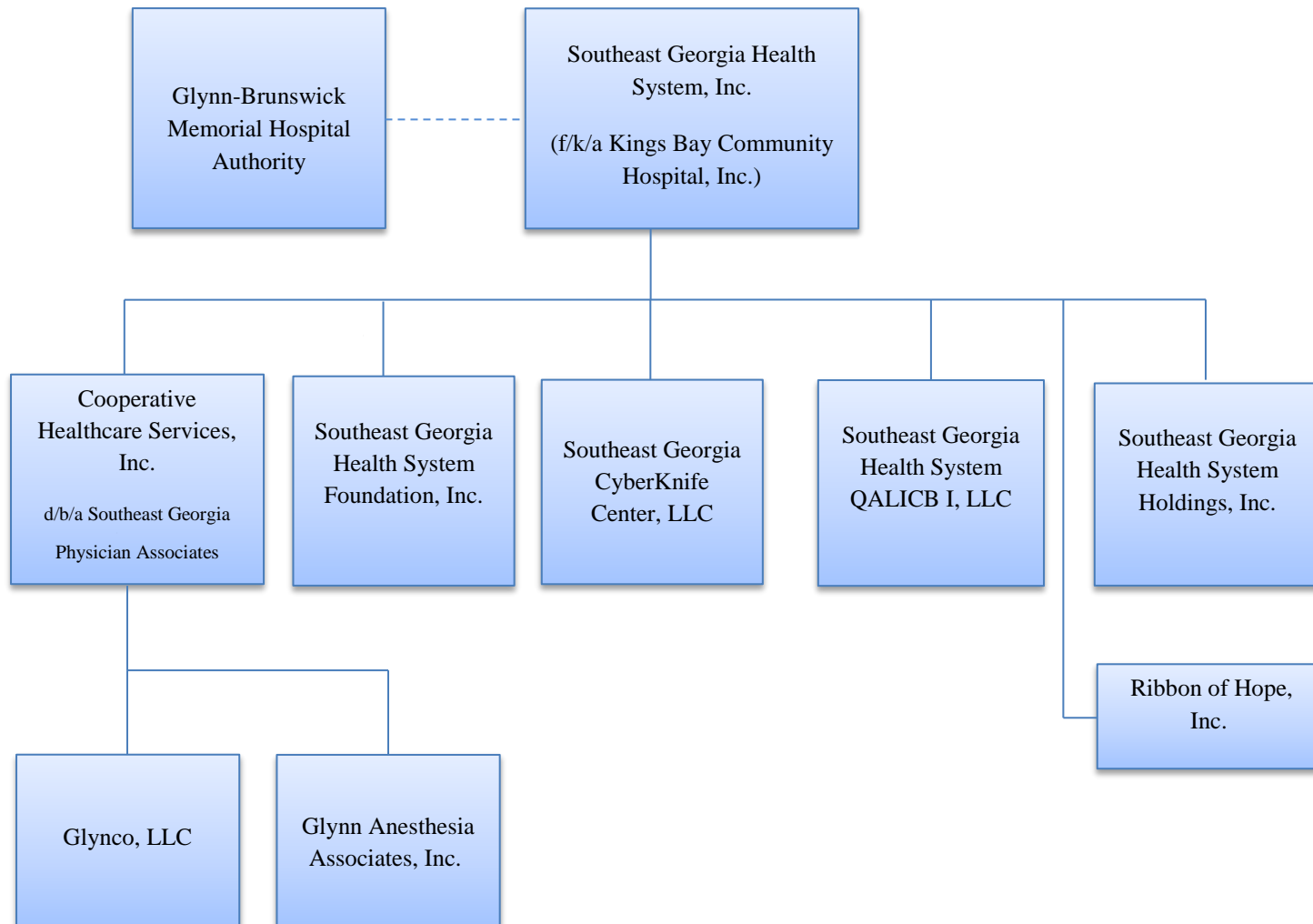




# SOUTHEAST GEORGIA HEALTH SYSTEM

## Organizational Chart October 1, 2019



## CORPORATE STRUCTURE

*Hospital Authority.* The Glynn-Brunswick Memorial Hospital Authority (the “Hospital Authority”) was created in 1961 pursuant to the Hospital Authorities Law by resolutions adopted by the governing bodies of Glynn County (the “County”) and the City of Brunswick (the “City”). The Authority originally operated Southeast Georgia Health System’s Brunswick Campus and certain other facilities pursuant to a lease agreement with the County and the City. In 1992, Kings Bay Community Hospital, Inc. (“Kings Bay”), the sole member of which was the Authority, acquired Southeast Georgia Health System’s Camden Campus. In 2015, the Hospital Authority undertook a corporate restructuring. As part of that restructuring, Kings Bay changed its name to “Southeast Georgia Health System, Inc.” (“SGHS”), and the Authority and SGHS executed a Lease and Transfer Agreement dated May 1, 2015, pursuant to which SGHS assumed substantially all of the operations, assets and liabilities of the Authority and agreed to operate the facilities thereof as a community healthcare provider.

*SGHS.* Southeast Georgia Health System, Inc. (the “Health System” or “SGHS”) operates two (2) acute care hospitals known as Southeast Georgia Health System - Brunswick Campus and Southeast Georgia Health System - Camden Campus.

*CHSI.* Cooperative Healthcare Services, Inc. d/b/a Southeast Georgia Physician Associates owns and operates the medical practices of the Health System which have been established to (a) meet identified primary and specialized care needs in the Health System’s service area, (b) offer alternatives to hospital-based emergency care and (c) meet the needs of patients covered by the State of Georgia Medicaid program. CHSI also owns Glynn Anesthesia Associates, Inc. and is a partner in Glynco, LLC, a real estate partnership. CHSI currently employs 155 healthcare providers in over 63 locations in five counties.

*Holdings.* Southeast Georgia Health System Holdings, Inc. was created in 2014 to provide flexibility for the Health System in undertaking future healthcare activities. The activities to be undertaken have not been determined, and Holdings has no assets or operations at this time.

### **Affiliated Entities**

*The Southeast Georgia Health System Foundation, Inc.* (the “Foundation”) was created in 1993 to raise funds for the Brunswick Campus. The Foundation is a Georgia non-profit corporation. SGHS is the sole corporate member of the Foundation and appoints its directors. It is currently a supporting organization to SGHS.

*Southeast Georgia CyberKnife Center, LLC* was created in 2010 to operate an outpatient cancer treatment center. SGHS owns a 51% interest in this operation which began providing CyberKnife radiation treatment service in 2011.

*Southeast Georgia Health System QALICB I, LLC* was created in 2013 as a financing vehicle for the construction of certain qualified projects under the New Market Tax Credit (“NMTC”) program offered through the Department of Treasury. The NMTC program permits corporate and individual taxpayers to receive a credit against federal income taxes for making qualified equity investments in qualified community development entities.

*Glynco, LLC* was created in 2003 as a real estate partnership. CHSI owns a 51% interest in this real estate partnership of the medical office building located at 11-15 Gable Court, Brunswick, Georgia.

*Glynn Anesthesia Associates, Inc.* was established in 2014 as a wholly owned subsidiary of CHSI for the purpose of providing anesthesia support within an endoscopy center located near the Brunswick Campus which is owned and operated by SGHS.

*Ribbon of Hope, Inc.* was formed as a means to provide durable medical equipment and other support products to patients of the Cancer Care Centers of the Health System.